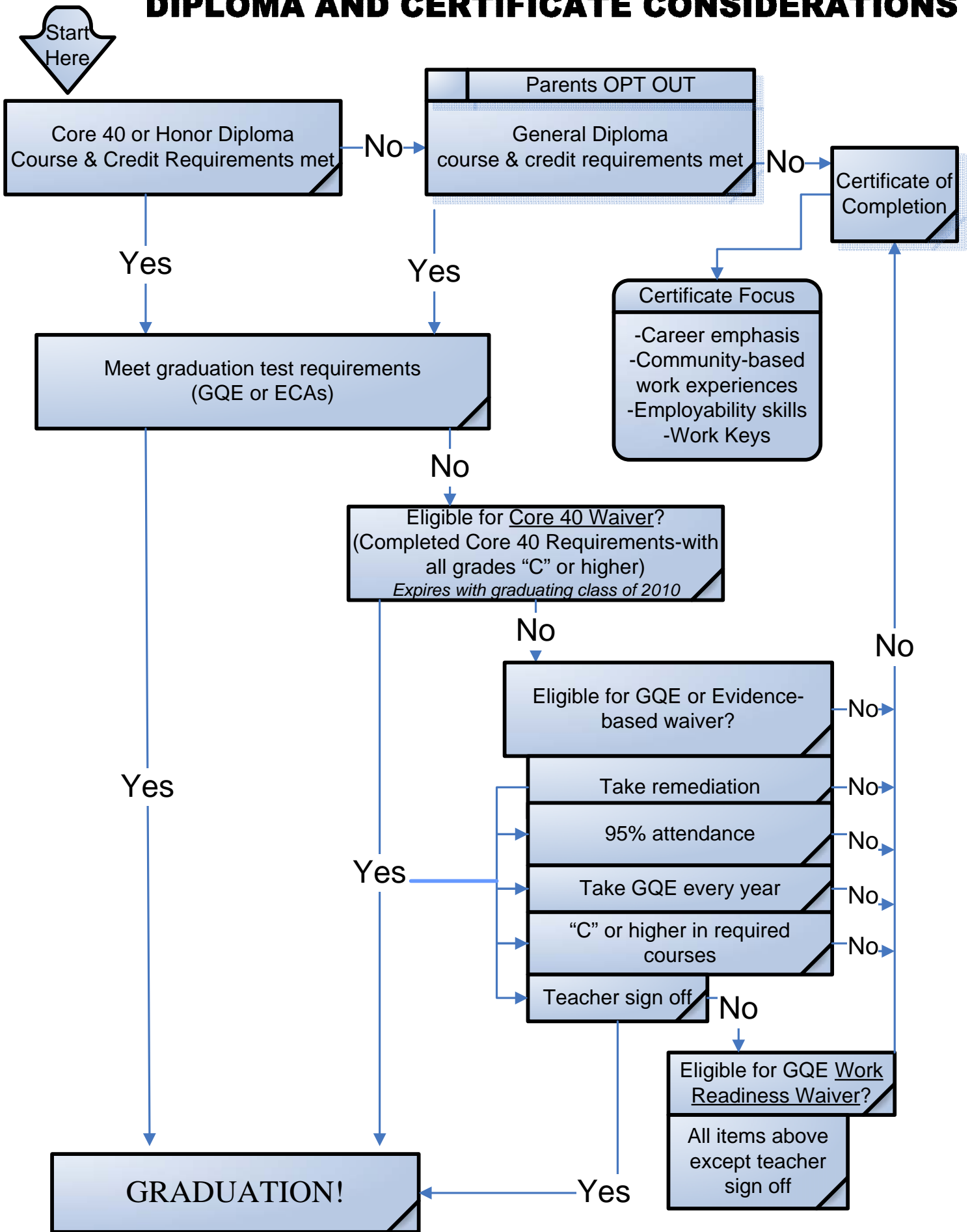


# DIPLOMA AND CERTIFICATE CONSIDERATIONS



## Glossary of Terms

<b>End of Course Assessments (ECA)</b>	The current GQE testing program will transition to End-of-Course Assessments (ECAs) in Algebra I and English 10, it is possible for several different scenarios to occur with regard to these classes.
<b>Core 40 diploma</b>	Indiana's minimum graduation requirement (graduating class of 2011 and beyond). To graduate with less than Core 40, a formal opt-out process must be completed. A Core 40 diploma is required to enter into Indiana's 4-year colleges.
<b>Opt out of Core 40 diploma for General Diploma</b>	<p>To graduate with less than Core 40, the following formal opt-out process must be completed:</p> <ul style="list-style-type: none"> <li>• The student, the student's parent/guardian, and the student's counselor (or another staff member who assists students in course selection) must meet to discuss the student's progress.</li> <li>• The student's career and course plan is reviewed.</li> <li>• The student's parent/guardian determines whether the student will achieve greater educational benefits by completing the general curriculum or the Core 40 curriculum.</li> </ul> <p>If the decision is made to opt-out of Core 40, the student is required to complete the course and credit requirements for a general diploma and the career/academic sequence the student will pursue is determined. Completing the general diploma allows the student to be admitted to any open-door academic institution (e.g., Ivy Tech, Vincennes University)</p>
<b>Core 40 Waiver (Expires with grad class of 2010)</b>	<ul style="list-style-type: none"> <li>• Complete a Core 40 diploma.</li> <li>• Have a grade of "C" or higher in all required and directed elective courses.</li> <li>• Have the recommendation from the principal (within one month of graduation).</li> </ul>
<b>GQE Evidence-based waiver</b>	<ul style="list-style-type: none"> <li>• Take the GQE at least one time your sophomore, junior, and senior years.</li> <li>• Complete any extra help or "remediation" sessions offered each year by your school to prepare for the GQE retests.</li> <li>• Maintain a school attendance rate of 95 percent or better over the course of your high school experience (excused absences are not counted against your attendance rate).</li> <li>• Have a "C" average, over the course of your high school career, in the courses required for graduation.</li> <li>• Satisfy any other state and local graduation requirements.</li> <li>• Get a written recommendation from the teacher(s) in the subject area(s) not passed, as well as one from the school principal, and show proof that the academic standards have been met, whether through other tests or classroom work.</li> </ul>
<b>GQE Work-readiness waiver</b>	<ul style="list-style-type: none"> <li>• Take the GQE at least one time your sophomore, junior, and senior years.</li> <li>• Complete any extra help sessions offered each year by your school to prepare for the GQE retests.</li> <li>• Maintain a school attendance rate of 95 percent or better over the course of your high school experience (excused absences are not counted against your attendance rate).</li> <li>• Have a "C" average, over the course of your high school career, in the courses required for graduation.</li> <li>• Satisfy any other state and local graduation requirements.</li> <li>• Complete the course and credit requirements for a general diploma, including the career academic sequence; a workforce readiness assessment; and, at least one career exploration/ internship, cooperative education, or a workforce credential recommended by your school.</li> </ul>
<b>Career Academic Sequence</b>	<p>Career academic sequence is a flexible sequence of courses designed to help a student explore and prepare for a specific career area or group of related occupations. Career academic sequences are selected and defined by local school corporations and recommended for all students regardless of postsecondary intentions. A career academic sequence includes progressive exposure to the world of work, with some sequences leading to a certificate recognized by business and industry. As a student progresses in a sequence and learns more about a specific career area, he/she may:</p> <ol style="list-style-type: none"> <li>1. Remain in the same career pathway throughout high school;</li> <li>2. Switch career pathways to explore an additional career area; or</li> <li>3. Enroll in a multi-credit career/technical program designed to help students develop knowledge and skills related to a specific occupation. Many multi-credit career and technical education (CTE) programs offer both high school and postsecondary credit.</li> </ol>